

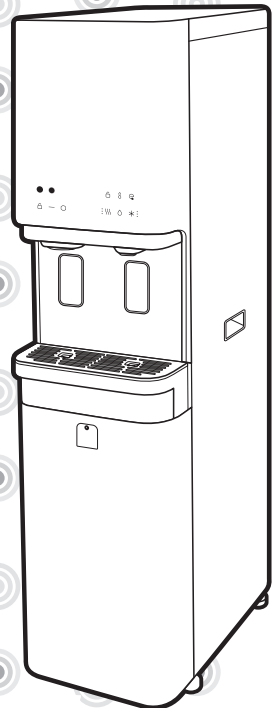


COWAY LOVES THE PLANET
This paper can be recycled.

COWAY

Coway Water Filtration Device CHPI-620L

- This product is for domestic use only. It cannot be used in overseas countries where the power voltage is different.
- Warranty card is included in this user's manual.
- Read and save these instructions.
- English/French/Spanish/Chinese/Korean



BENEFITS OF COWAY WATER FILTRATION DEVICES

1

A water filtration device with an ice-making feature

It is conveniently designed to provide cold water and ice.



2

Simple ice dispensing lever

The user can easily get ice just by gently pressing the ice dispense lever.



3

Dispenser hole lighting

When an ambient/cold/hot water or ice outlet is in use, a soft lamp will light up.



4

Front draining system

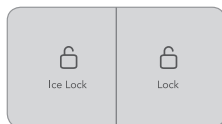
Hot water can be drained from the front simply by opening the front drain cover, without moving the product.



5

Locking feature (ice/hot water dispenser)

With ice/hot water locking features, children and the elderly can use the product safely.



6

Power saving feature with a light sensor

When the Power Saving button is pressed, the number of motor and heater operations will decrease automatically at night, reducing power consumption.



7

Removable internal water tank for cleaning purpose

Since the internal water tank is removable, it can be cleaned easily.
*The cleaning procedure for internal water tank should be performed by trained professionals only.



8

Fine particle filtering system

Plus Inno-Sense Filter minimizes the amount of fine dust that can enter the internal water tank.



DEAR CUSTOMERS

Thank you for using **Coway Ice Water Filtration Device**.

Please read this User Manual to learn about proper usage and maintenance of the product.

When a problem occurs while using the product, it can be solved by referring to the instructions in this manual. As this manual contains the Product Warranty Card, please keep it in a safe place.

CONTENTS

For Information

- | 03 | **Safety Information**
Regarding Power Supply
Regarding Installation
During Use
Others
- | 07 | **Parts Name**
- | 09 | **Water Filtration Process**

How to use

- | 10 | **Please Check Before Use**
- | 11 | **Buttons and Indicators**
- | 14 | **How to Get the Desired Water**
How to Get Cold Water
How to Get Hot Water
How to Get Ambient Water
How to Get Ice

Maintenance

- | 16 | **How to Install**
- | 18 | **How to Clean (Cody Heart Service)**
How to Clean the internal water tank
- | 21 | **Cleaning Method (for customers)**
How to Clean the Drip Tray
How to separate and clean the basket
How to Clean the Faucet Cap
- | 22 | **Filter Replacement**
- | 23 | **How to Replace the Filter**

Others

- | 25 | **Troubleshooting**
- | 26 | **Product Specifications**
- | 27 | **Water Flow Diagram**
- | 28 | **PERFORMANCE DATA SHEET**
- | 33 | **Product Warranty Card**

- Always keep the User Manual in a place that can be easily accessed. -

SAFETY INFORMATION

Please follow the instructions as they are for your safety.

Please read this information to ensure your safety and prevent property damage.

Please read the cautions carefully and use the product correctly.



DANGER

If not observed, serious injury or property damage could occur.



WARNING

If not observed, serious injury or property damage could occur.



CAUTION

If not observed, minor injury or property damage could occur.

Regarding Power Supply

Do not use a damaged power plug or loose outlet.

If not observed, electric shock or fire could occur.

Do not pull on the power cord.

If not observed, electric shock or fire could occur.

Do not move the product by pulling the product with the power cord.

If not observed, electric shock or fire could occur.

Do not touch the power plug with wet hands.

If not observed, electric shock or fire could occur.

To prevent the power cord from being damaged or deformed, do not forcefully bend it or put it under heavy objects.

If not observed, electric shock or fire could occur.

Do not plug and unplug the power plug repeatedly.

If not observed, electric shock or fire could occur.

If the electric outlet is wet, carefully unplug the unit and let the electric outlet completely dry before subsequent use.

If not observed, electric shock or fire could occur.

Make sure the product is unplugged while the product is being repaired, inspected, or when its parts are being replaced.

If not observed, electric shock or fire could occur.

Remove any dust or water off the pin and contacts of the power plug.

If not observed, electric shock or fire could occur.

- ⚠ **Do not plug into an outlet that is being used by several other appliances. Use a dedicated outlet.**

If not observed, electric shock or fire could occur.

- ⚠ **When you do not want to use the product for an extended period, shut off the main water supply valve and unplug the product.**

If not observed, electric shock or fire could occur.

- ⚠ **Do not arbitrarily connect or bend the power cord.**

If not observed, electric shock or fire could occur.

- ⚠ **If the power cord is damaged, do not replace the cord by yourself. Call the Coway Service Center to have it replaced.**

If not observed, electric shock or fire could occur.

Regarding Installation

- ⚠ **Do not install near a heating device.**

If not observed, fire could occur.

- ⚠ **The main water must be supplied to the cold water tube.**

Supplying the main water to the hot water tube may cause breakdown of the product or accidents.

- ⚠ **Do not subject the product to constraint or impact.**

If not observed, the product may be damaged.

- ⚠ **Do not install the product on a sloped floor. Do not subject the product to constraint or impact.**

If not observed, physical injury and product damage could occur.

- ⚠ **Do not install the water filtration system in a damp place, a place where dust is present, or a place where water drips.**

If not observed, electric shock or fire could occur.


SAFETY INFORMATION


DANGER If not observed, serious injury or property damage could occur.



WARNING If not observed, serious injury or property damage could occur.


CAUTION If not observed, minor injury or property damage could occur.

During Use

 **When water leaks inside the product or water pools around the product, shut off the water supply valve and unplug the product, and call the Service Center.**


If not observed, electric shock could occur.

 **If the product produces a strange noise, burning smell, or smoke, immediately unplug it from the electrical outlet and call the Service Center.**


If not observed, electric shock or fire could occur.

 **Do not put a candle or a cigarette out on the product.**

If not observed, fire could occur.

 **Do not place a bowl filled with water, medicine, food, small metallic objects, or any flammable materials on the product.**

If the content of any of the above material spills into the product, electric shock, fire or damage could occur.

 **Do not hold onto the cold/hot/ambient water/ice dispenser hole on the product front. In particular, make sure that children do not play with the dispenser holes.**

If the product collapses, it could cause physical injury and product damage.

 **Close the water tank cover inside completely before use.**

Insects or other foreign particles can enter the product.

 **When the user has not used the product for an extended period, drain the saved water completely and rinse out the newly filled water once before using it.**

The saved water could be polluted.

 **Do not allow hot water to come in contact with body parts.**

If not observed, burns could occur.

 **To drink the filtered water, change the filter according to the filter replacement cycle.**

If the user uses an old filter whose expiration date has passed, the system performance may degrade.

Others

⚠ Unplug the electrical power cord before cleaning.

If not observed, electric shock or fire could occur.

⚠ Do not repair, disassemble, or modify the product arbitrarily.

If not observed, electric shock or fire could occur.

⚠ Do not clean by spraying water directly and do not wipe the product using benzene or other thinners.

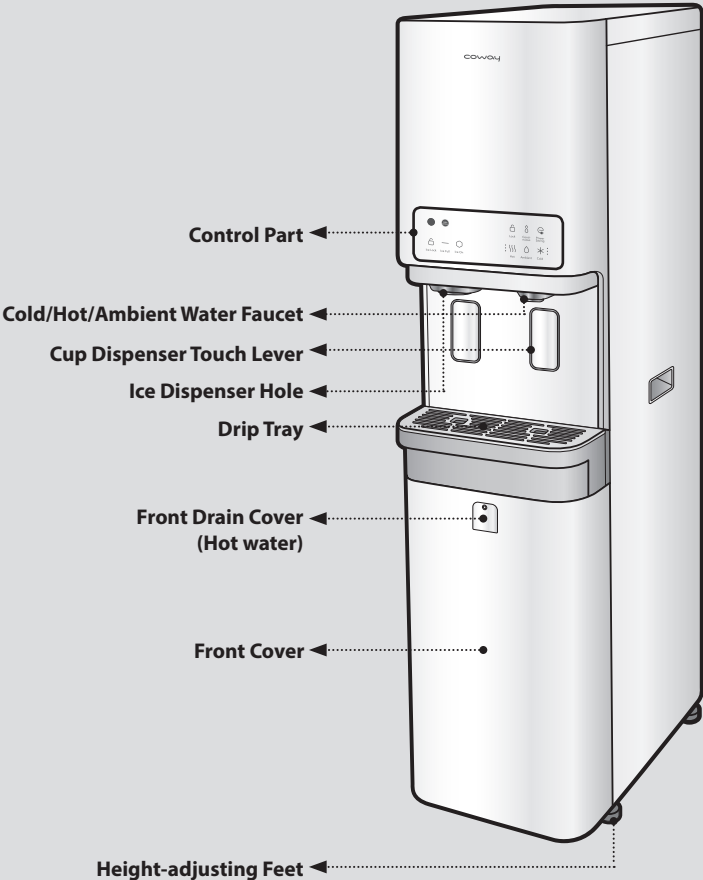
If not observed, electric shock or fire could occur.

⚠ Do not use filtered water for an aquarium or a fishbowl.

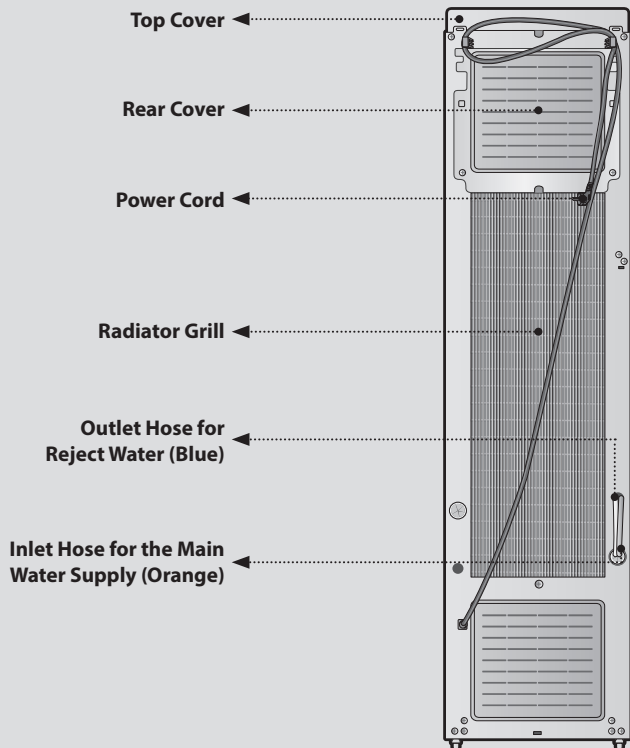
The water filtered through a membrane removes ionic substances, possibly making it not suitable for fish to live in. In some cases, the filtered water might kill fish.

PARTS NAME

Front



Back



Parts



User Manual



Drain Hose



Distance
Maintenance Rod



Antibacterial
Filter



Fitting Clip

WATER FILTRATION PROCESSES

The essence of the water filtration system lies in the filters.

Using a filter that is not certified or even using a certified filter for too long may compromise the filter performance.

The 5-step water filtration system (CHPI-620L)

First filter: Neo-Sense filter

Step 1: Neo-Sense filter removes particulate materials, such as sand and rust, from the main water supply.

Step 2: Removes chlorine from the main water supply and protects the membrane filter.

2nd filter: Membrane filter (RO)

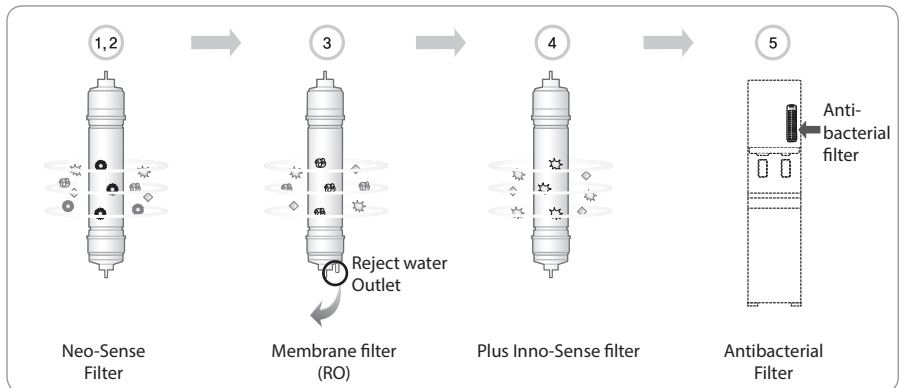
Step 3: Membrane filter (RO) removes pollutants, including heavy metals, microorganisms, organic matters, and inorganic ions. The water with concentrations of harmful substances (reject water) is drained inside the reject water drain hose.

3rd filter: Plus Inno-Sense filter

Step 4: Plus Inno-Sense filter improves the water's taste by removing odor-causing substances, soluble pollutants, chlorine, and volatile organic compounds.

4th filter: Antibacterial filter

Step 5: The antibacterial filter inhibits microorganism development.



Tips

Uses of reject water

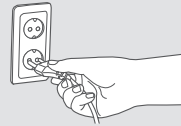
- Reject water can be used for cleaning the bathroom, around the house, washing clothes, or purposes other than drinking.
- Never use the reject water for drinking or cooking.

PLEASE CHECK BEFORE USE

Please check before use!

- ⚠ **This water filtration unit must be plugged into its own dedicated 120 V~ 60 Hz, AC only electric outlet.**

It must be plugged into a grounded 120 V~ 60 Hz outlet. It must be connected to a power source for the product to work normally.



- **Open the main water supply valve.**

The main water supply must be turned on for the product to work normally.

- **When the indicator in the indication part is turned off.**

When the indicator in the indication part is turned off, check if the power supply was shut off due to power failure or other causes.

- **When the user has not used the product for a long time**

When the user has saved water for a long time or has not used water for a while, drain the water inside the water filtration device completely, and rinse out the newly filtered water one time before use.

- **After installing the water filtration system**

Following the product installation, make sure the water tank is emptied or the water is filtered for 50 minutes or longer. (Empty the water tank filled with filtered water two times or more.)

- **Regular filter replacement**

It is very important to replace the filter regularly to maintain the intended water quality. If the filter is used beyond its service life, the performance of the water filtration device will deteriorate. Take note of the filter replacement cycle.

- **When the user does not want to use product for an extended period**

Close the main water supply valve and unplug the power cord.

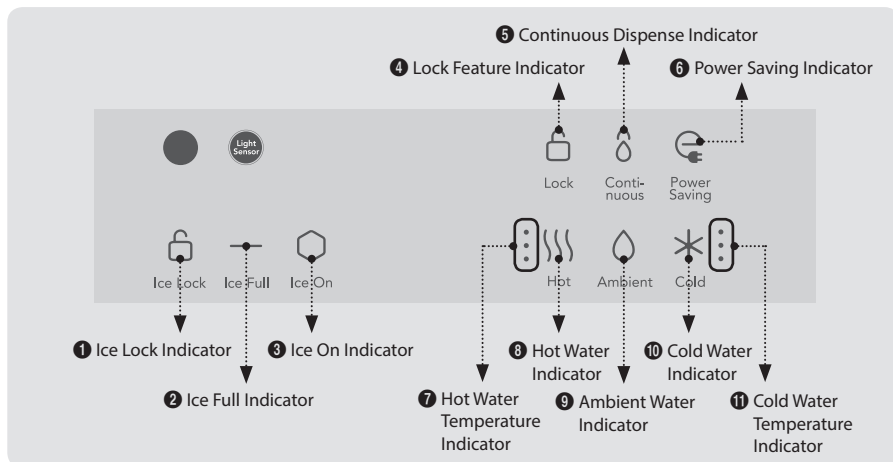


Tips

Close the main water supply valve and unplug the power cord.

BUTTONS AND INDICATORS

Indication Part



1 Ice Lock Indicator

The indicator is on when the Ice Lock feature is selected.



2 Ice Full Indicator

The indicator is on when the ice storage compartment is full.



3 Ice On Indicator

The indicator is on when ice-making feature is selected.



4 Lock indicator

The indicator is on when the lock feature is selected.



5 Continuous dispense indicator

The indicator is on when the Continuous dispense feature is selected.



6 Power Saving indicator

The indicator is on when the Power Saving feature is selected. (The indicator will blink when the Power Saving mode is on.)



7 Hot Water Temperature Indicator

The indicator light will light up according to the hot water temperature.



8 Hot Water Indicator

The indicator is on when the Hot Water feature is selected.



9 Ambient Water indicator

The indicator is on when the Ambient Water feature is selected.



10 Cold Water Indicator

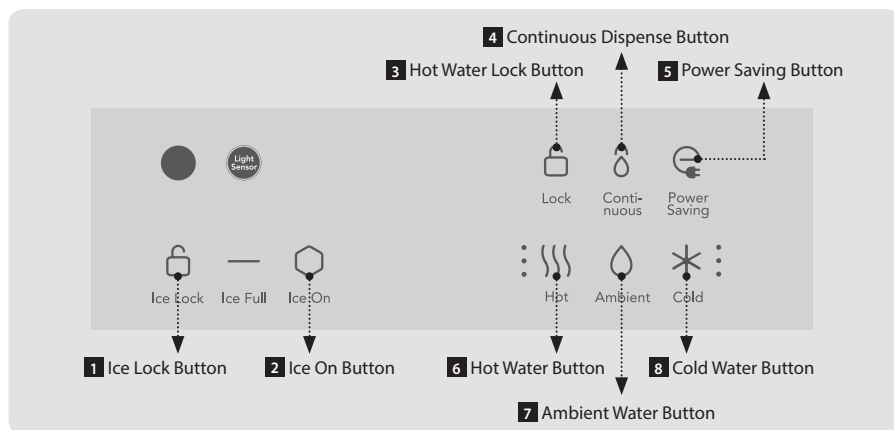
The indicator is on when the Cold Water feature is selected.



11 Cold Water Temperature Indicator

The indicator light will light up according to the selected cold water temperature.

Control Part



Ice Lock

1 Ice Lock Button

Use this button to activate/deactivate the Ice Lock feature. When locked, no ice will be dispensed even if the dispenser lever is pressed. (Press and hold)



Ice On

2 Ice On Button

Use this button to activate/deactivate the ice-making feature. (Press and hold)



Lock

3 Hot Water Lock Button

Use this button to activate/deactivate the Hot Water Lock feature. When locked, no hot water will be dispensed even if the dispenser lever is pressed. (Press and hold)



Continuous

4 Continuous Dispense Button

Use this button to dispense water continuously. The user can dispense water continuously for approximately 1 minute.



Power Saving

5 Power Saving Button

Use this button to activate/deactivate the Power Saving feature. (Press and hold)



Hot

6 Hot Water Button

Use this button to activate/deactivate the Hot Water feature. (Press and hold) Use this button to dispense hot water. (Press shortly)



Ambient

7 Ambient Water button

Use this button to dispense ambient water.



Cold

8 Cold Water button

Use this button to activate/deactivate the Cold Water feature. (Press and hold) Use this button to dispense cold water. (Press briefly)

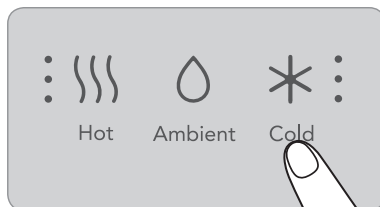
BUTTONS AND INDICATORS

■ How to use the Cold Water feature

Press the Cold Water button for a few seconds and check if the Cold Water indicator is on.

The indicator light will light up based on the cold water temperature.

Press the Cold Water button again for a few seconds to deactivate it.



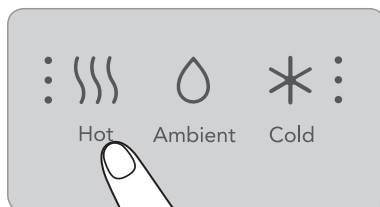
■ How to use the Hot Water feature

Press the Hot Water button for a few seconds and check if the Hot Water indicator is on.

The indicator light will light up based on the hot water temperature.

Press the Hot Water button again for a few seconds to deactivate it.

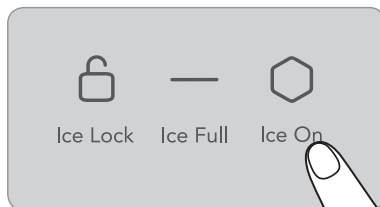
* It takes about 30 minutes to dispense hot water after activating the Hot Water feature.



■ How to use the ice-making feature

Press the Ice On button for a few seconds and check if the Ice On indicator is on.

Press the Ice On button again for a few seconds to deactivate it.

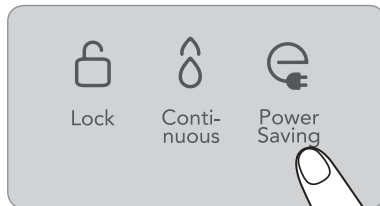


■ How to use the Power Saving feature

When pressing the Power Saving button for a few seconds, the Power Saving indicator will turn on.

When this indicator is lit, the motor and heater reduce the operation at night, allowing you to save energy.

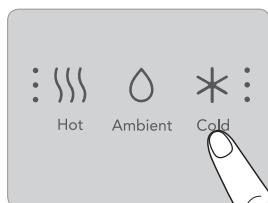
* Activating Power Saving mode at night may result in fewer ice cubes dispensed as the ice-making feature will be suspended regularly.



HOW TO GET THE DESIRED WATER

How to Get Cold Water

Push the Cold Water button and press a glass against the dispenser lever to dispense cold water.

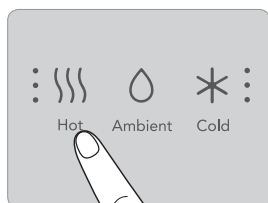


Tips

- If the unit does not dispense cold water, check if the Cold Water indicator is on (refer to P.11).
- If the Continuous dispense button is pressed before or during dispensing, hot water will be dispensed continuously.

How to Get Hot Water

Push the Hot Water button and press a cup against the dispenser lever to dispense hot water.



Tips

- If the unit does not dispense hot water, check if the Hot Water indicator is on (refer to P.11).
- The hot water feature will be deactivated after some time, and the cold water feature will be activated automatically. (If the Cold Water feature was selected previously, or if none was selected, the Ambient Water feature will be activated)
- If the Continuous dispense button is pressed before or during dispensing, hot water will be dispensed continuously.

HOW TO GET THE DESIRED WATER

How to Get Ambient Water

Push the Ambient Water button and press a glass against the dispenser lever to dispense ambient water.



Tips

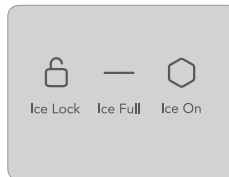
- If the unit does not dispense ambient water, check if the Ambient Water indicator is on (refer to P.11).
- If the Continuous dispense button is pressed before or during dispensing, hot water will be dispensed continuously.

How to Get Ice

Please check if the Ice On indicator is on. Press a glass against the ice dispenser lever to get ice.

* When ice is dispensed, a little amount of water from melted ice may be dispensed also.

* Be careful of a possible splash of what is inside the glass.

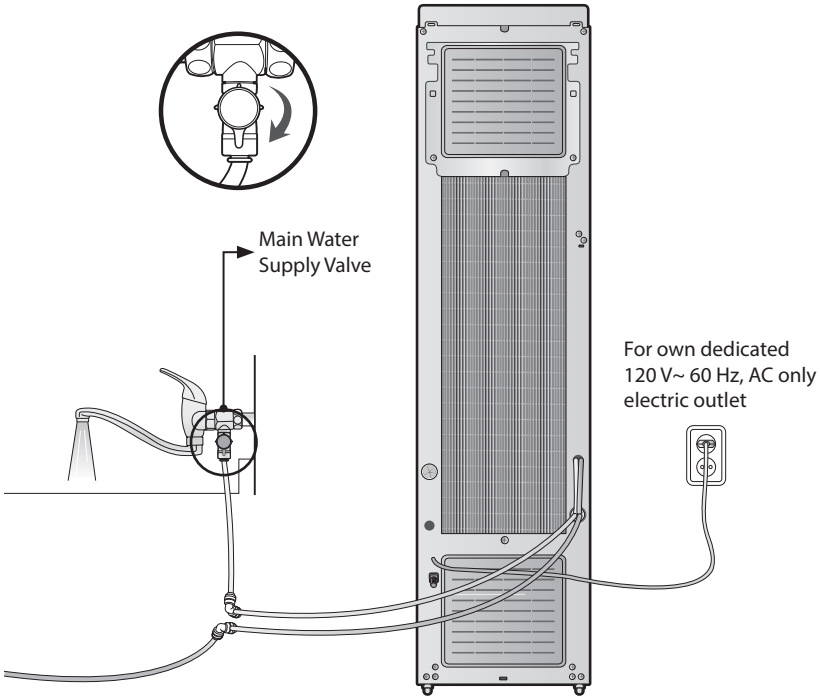


Tips

- If the unit does not dispense ice, check if the Ice indicator is on (refer to P.11).
- Ice will be dispensed only when the ice dispenser lever is pressed. Have the ice dispenser lever pressed continually while getting ice.
- When ice cubes are dumped into the storage tank, a clattering noise may be heard.

HOW TO INSTALL

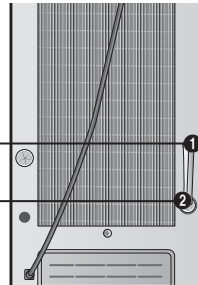
Installation Guide



Connect the orange inlet hose into the tap water supply pipe **1**. Connect the reject water drain hose **2**.

Tap water supplying hose
(orange) tubing

Reject water outlet hose
(blue) tubing (CHPI-620L)



HOW TO INSTALL

Be Careful!

■ Where to install the water filtration unit I

Install the product in a cool part of the room, on an even surface, out of direct sunlight and away from humidity, dust, and dripping water.

■ After installing the water filtration unit

Filter the water for more than 50 minutes or fill and drain once before using the unit. (Drain the filtered water more than twice.)

■ Cold water tubing

Make sure the unit is connected to the cold water supply line. (If connected to the hot water supply line, the filtration unit may be damaged.)

■ Water filtration installation location II

Allow a clearance of 10 cm or more behind the product, and level the water filtration unit.

■ Relocation and installation

Following relocation of the unit, plug in the electric power cord 30 minutes after installation is complete.



Tips

- ⚠ There may be some water remaining inside the filter, which was used to test the product during inspection process. Please rest assured that it is a brand new product.
- ⚠ When installing this new filtration unit, do not reuse the main water supply valve and hose.

HOW TO CLEAN

How to Clean the Internal Water Tank

1. Use the drain hose to completely drain the water from the internal tank, and save the drained water.

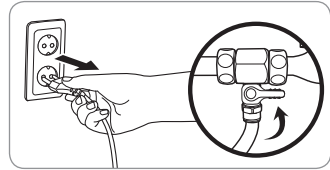
* For cold water, push the Cold Water button and press the dispenser lever to drain cold water.

* For ambient/hot water, open the front drain cover and use the drain hose to drain the water.

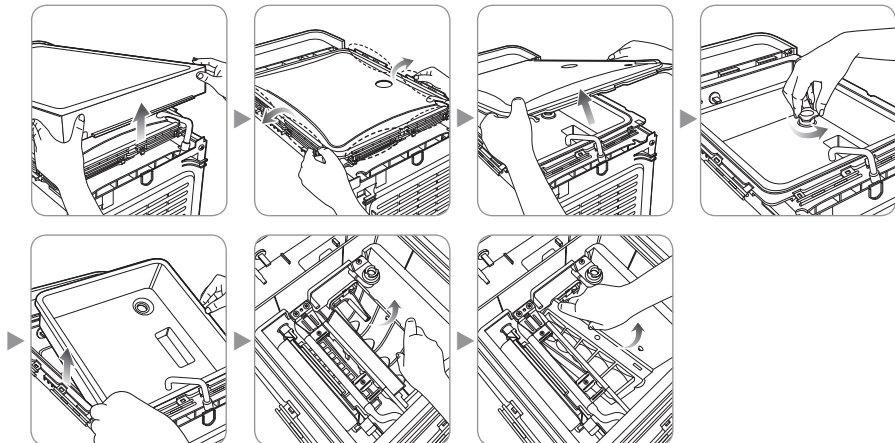


2. Press the Cold/Hot Water button for approximately 3 seconds at the front of the unit to turn off the feature, and close the main water supply valve before draining the water from the cold water tank completely.

When draining is complete, unplug the electric power cord.

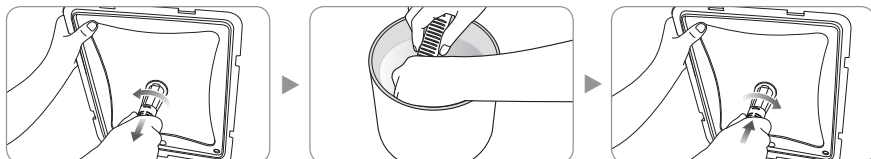


3. Lift the top cover open, unlock the fixing latches (6) on the internal water tank, take the hose out, and open the internal water tank cover. Unscrew the internal water tank fixing latches and separate the internal water tank, ice tray, and internal tank.

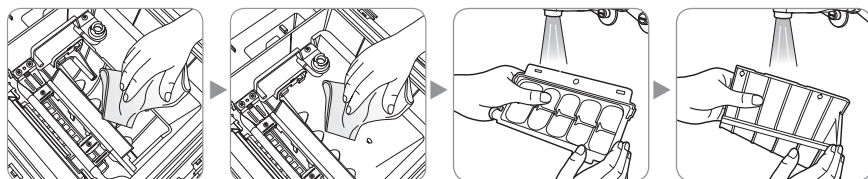


HOW TO CLEAN

4. Separate the antibacterial filter from the cover of the internal water tank and shake & rinse it out in clean stored water before putting it back in.



5. Please wipe the inside of the cold water/ice storage tank, and the surface of the evaporator using a soft cloth.

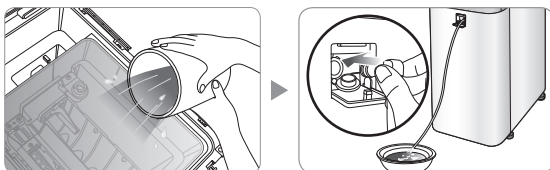


- 6 Install the internal water tank in the unit and lock the fixing latches of the internal water tank clockwise.

* If the internal fixing latches are not turned tightly, leaks may occur.

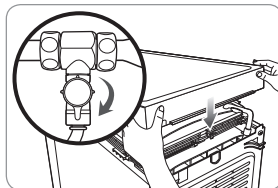


7. Use clean water to rinse out the internal water tank, use the drain hose to drain the water completely, and rinse out the newly filled ambient water.



8. Close the internal water container cover and top cover, plug in the electric power cord, and open the water supply valve.

Check if the water is dispensed from the cold/ambient/hot water faucet before restarting the water filtration unit by pressing the Ice Lock/Hot Water/Cold Water buttons.



Tips

- ⚠ **Close the internal water tank cover completely.**
Bugs or foreign material may enter the unit.
- ⚠ **Do not use chemicals or detergents to clean the inside of the internal water tank.**
If chemicals or detergents are not washed off completely, they may cause a personal injury.
 - Keep the surroundings of the filtration unit sanitary, and clean inside the storage tank every two months.

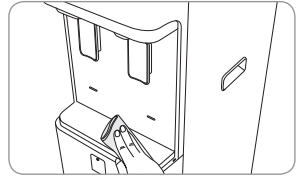
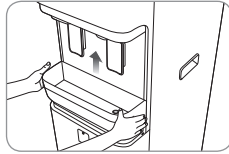
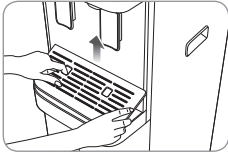


HOW TO CLEAN

How to Clean the Drip Tray

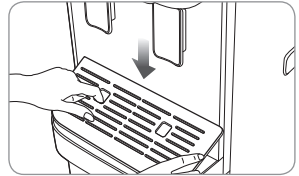
1. How to separate the drip tray

Separate the drip tray and wipe the inside with a soft cloth.



2. How to assemble the drip tray

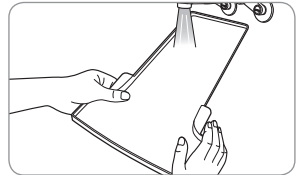
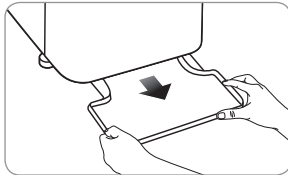
Slightly lift the drip tray cover .



How to Separate and Clean the Basket

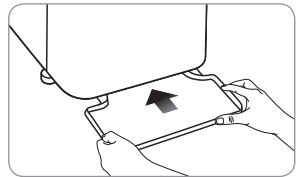
1. How to separate the basket

Separate the basket at the bottom of the unit and rinse the inside out with running water.



2. How to assemble the basket

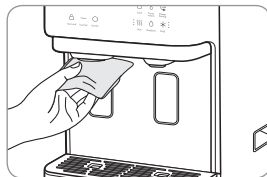
Push the basket forward to fit it into the bottom slot.



How to Clean the Faucet Cap

Wipe the dirty areas of the faucet cap with a soft, dry cloth.

If the area needs more cleaning, wipe it with a soft, damp cloth.



Tips



Never use benzene or other thinners to clean. It may cause discoloration of the product and injury.

FILTER REPLACEMENT

Filter Replacement

■ Filter

The essence of the water filtration system lies in the filters. Using a filter that is not certified or even using a certified filter for too long may compromise filter performance. Please make sure to change the filter within the replacement cycle.

Only Coway filter



■ Filter replacement cycle

If filters are not replaced regularly, filtered water quality may be compromised. Estimated filter replacement cycles may vary depending on the quality of the main water supply or the volume of the filtration.

CHPI-620L

Filter Model	Expected Replacement Cycle
Neo-Sense Filter	4~6 months
Membrane filter (RO)	18~24 Months
Plus Inno-Sense filter	12~16 Months
Antibacterial Filter	12 Months

Filter replacement



■ About the filter replacement cycle

An estimated filter replacement cycle should be determined according to the quality of the tap water.

In the area with poor water quality or more applications, the changing cycle is shortened

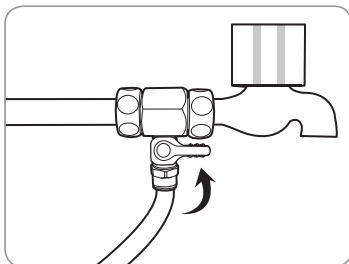
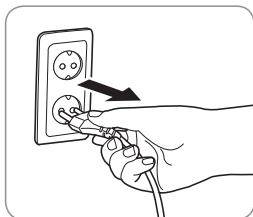


The filter replacement cycle described above refers to a minimum processing capacity in which pollutants will be removed efficiently without cleaning, recycling or replacing the filter, and it may be different from the expected replacement cycle of an individual filter.

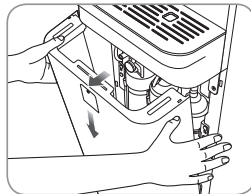
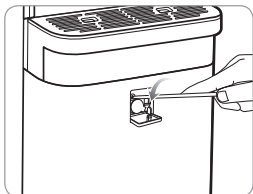
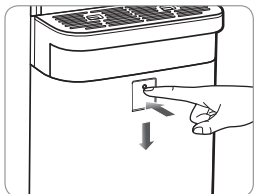
HOW TO REPLACE THE FILTER

Don't Forget to Replace the Filter!

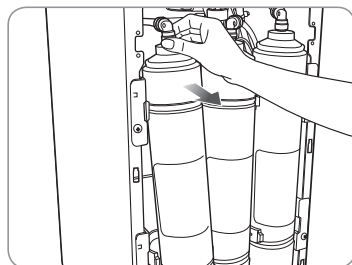
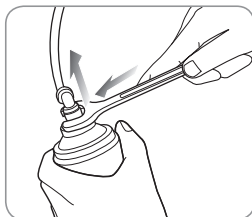
1. Unplug the power cord, close the water supply valve, and completely drain the water inside the filtration unit (refer to P.18).



2. Push down the front drain cover and loosen 1 screw using a screwdriver. Press down the front cover and pull it forward to separate.



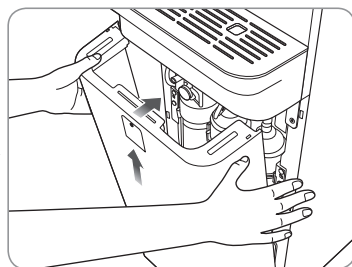
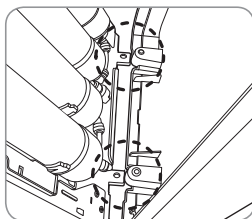
3. After removing the fitting from the filter to be replaced, replace the filter (use a proper tool for the separation).



Tips

- ⚠ Following filter replacement, check if there is a leak by connecting the fitting and hose tightly, and make sure the first filtered water is drained.

4. Fit the front cover into the slots and push it in. Use a screwdriver to tighten the screw on the front drain and slide the slots into place and push the front drain cover to close it.



Tips

- ⚠ A new filter must be rinsed out before use.
- Neo-Sense filter: Assemble after flushing it for about 1 minute.
 - Plus Inno-Sense filter: Assemble it without flushing.
 - Membrane (RO): Install a reject water valve, and flush it for about 5 minutes before assembly.

TROUBLESHOOTING

The water filtration device may operate abnormally due to minor causes not because of the product malfunction but because of the fact that the user is not familiar with the product use. In such a case, problems can be solved easily even without the help from the Service Center by checking the following items. If you can't solve the problem after checking the following items, please call the Service Center.

Symptom	Check	Measures to take
The water tastes weird.	• Did you clean the storage tank?	Clean the storage tank.
	• You didn't use the water filtration device for a long time.	Get rid of the saved water and clean the storage tank.
	• Isn't it about time to change the filter?	Request the filter replacement.
The water doesn't come.	• Is the water supply cut or isn't the water supply valve closed?	Open the main water supply valve.
	• Did you miss the filter replacement times?	Request the filter replacement.
The water is flowing slower.	• Isn't it about time to change the filter?	Request the filter replacement.
	• Does the main power connect to the voltage rating that matches it on the rating plate?	Connect the power cord to the voltage rating that matches it on the rating plate.
	• Didn't you close the main water supply valve?	Open the main water supply valve.
	• Didn't the temperature of the main water drop suddenly?	If the water temperature is lowered, the water amount is decreased.
The cold water doesn't come.	• Was the cold water mode indicator lightened?	Please press the cold water mode selection button.
	• Didn't you close the main water supply valve?	If it is the low water level to protect the electric motor, the cooling function doesn't operate. Open the main water supply valve.
	• Isn't the back side of the water filtration device and the wall too close?	Please keep the distance between the back of the water filtration device and the wall to 10 cm or more.
All operation was stopped suddenly when driving.	• Is the main water being supplied actively?	Check the main water supply valve.
	• Does the main power connect to the voltage rating that matches it on the rating plate?	Connect the power cord to the voltage rating that matches it on the rating plate.
	• Isn't water overflowing or leaking?	Request A/S.
	• Are all the LEDs blinking?	Request A/S.

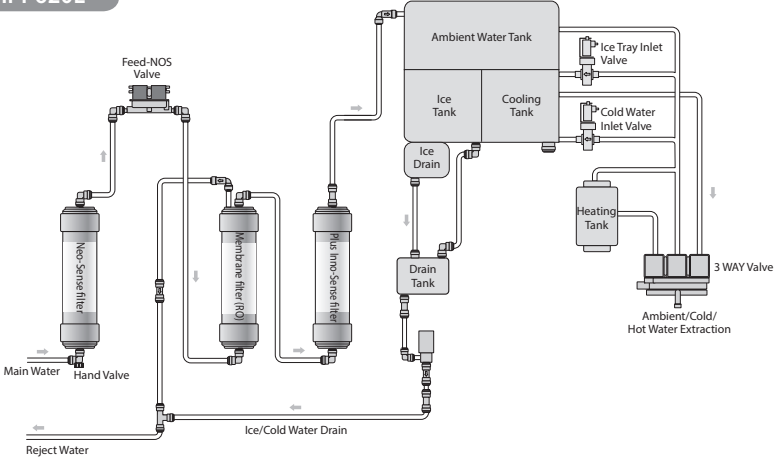
PRODUCT SPECIFICATIONS

Product Name		Electric Cold Water Dispenser (Hot Water and Ice Maker combined)
Model		CHPI-620L
Filtration Method		Reverse osmosis system
Recovery Rate		50 % (343 kPa, 25 °C, NaCl 200 ppm)
Standard Power Voltage		120 V~ 60 Hz
Rated Power Input		Motor: 0.9 A, heater: 310 W
Cooling Method		Natural cooling method (refrigerant: R-134a)
Major Features		Ambient water, cold water, ice-making, hot water, overheating prevention, supercooling prevention
Water Tank Capacity	Ambient water	3.5 L
	Cold water	2.5 L
	Hot water	1.5 L
	Ice	1 kg
	Total	7.5 L
Filter Material	Neo-Sense Filter	Active carbon block
	Membrane filter (RO)	Reverse osmosis membrane
	Plus Inno-Sense filter	Active carbon block, felt
	Antibacterial filter	Ceramic ball
Size (W x D x H)		300 mm (W) x 500 mm (D) x 1,291 mm (H)
Water Temperature		5 °C - 35 °C
Working Temperature		5 °C - 35 °C
Daily Filtration Flow		265 L/d (on the basis of NSF/ANSI 58: 345 kPa, 25 °C, NaCl 750 ppm)
Working Pressure		138 kPa – 827 kPa
Weight		35.2 kg

- Daily filtration flow reflects test results in line with standards set by an institute. It may vary depending on the water pressure, temperature, and quality of where the filtration unit is installed.
- Water tank capacity reflects the size of the water tank, and may be different from what is dispensed from the filtration unit.
- For product improvement purposes, product specifications are subject to slight changes without prior notice.
- Recovery rate refers to the rate of outflow quantity in relation to inflow quantity.

WATER FLOW DIAGRAM

CHPI-620L



Water Filtration System Performance Data Sheet



Model: CHPI-620L

This system has been tested and certified by the Water Quality Association according to NSF/ANSI 42, 53, and 58 for the reduction of the substances listed below. The concentration of the indicated substances in water entering the system was reduced to a concentration less than or equal to the permissible limit for water leaving the system, as specified in NSF/ANSI 42, 53, and 58.

Substance	Influent Challenge Concentration (mg/L unless specified)	Maximum Allowable Product Water Concentration (mg/L unless specified)	Percent Reduction (%)
Arsenic (Pentavalent)	0.050 ± 10%	0.010	97.8
Barium	10.0 ± 10%	2.0	97.2
Radium 226/228	25 pCi/L	5 pCi/L	80
Cadmium	0.03 ± 10%	0.005	98.2
Chromium (Hexavalent)	0.3 ± 10%	0.1	98.6
Chromium (Trivalent)	0.3 ± 10%	0.1	99.4
Lead	0.15 ± 10%	0.010	99.1
Copper	3.0 ± 10%	1.3	98.1
Selenium	0.10 ± 10%	0.05	98.3
TDS	750 ± 40	187	92.6
Aesthetic Chlorine	2.0 ± 10%	≥ 50% reduction	79.3
VOC*	0.300 ± 10%	≥ 95% reduction	99.6

While testing was performed under laboratory conditions, actual performance may vary.

General Operating Information:

Rated Capacity	1 100 L (for VOC) 19 000 L (for Aesthetic Chlorine)
Min-Max operating pressure:	138 kPa ~ 827 kPa
Min-Max feed water temperature:	5 °C ~ 35 °C
Rated Service Flow	0.26 L/min
Daily Water Production Rate	258.2 L/d
Product Efficiency Rating	47.1 %
Electrical Requirements:	120 V~ 60 Hz

- Do not use with water that is microbiologically unsafe or of unknown quality without adequate disinfection before or after the system.
- Refer to the owners manual for specific installation instructions, manufacturer's limited warranty, user responsibility, and parts and service availability.
- The influent water to the system shall include the following characteristics:
 - o No organic solvents
 - o Chlorine: < 2 mg/L
 - o pH: 7 - 8
 - o Temperature: 5 °C ~ 35 °C
 - o Iron: < 2 mg/L
 - o Turbidity: < 1 NTU
 - o Hardness: < 1 000 mg/L

- For parts and service availability, please contact your CODY or call center.
- This system has been tested for the treatment of water containing pentavalent arsenic (also known as As(V), As(+5), or arsenate) at concentrations of 0.050 mg/L or less. This system reduces pentavalent arsenic, but may not remove other forms of arsenic. This system is to be used on water supplies containing a detectable free chlorine residual at the system inlet or on water supplies that have been demonstrated to contain only pentavalent arsenic. Treatment with chloramines (combined chlorine) is not sufficient to ensure complete conversion of trivalent arsenic to pentavalent arsenic. Please see the Arsenic Facts section of this Performance Data Sheet for further information.
- Efficiency rating means the percentage of the influent water to the system that is available to the user as reverse osmosis treated water under operating conditions that approximate typical daily usage.
- This reverse osmosis system contains a replaceable treatment components, critical for the effective reduction of total dissolved solids and that product water shall be tested periodically to verify that the system is performing properly. Replacement of reverse osmosis component should be with one of identical specifications, as defined by the manufacturer, to assure the same efficiency and contaminant reduction performance.
- The estimated replacement time of filter, which is a consumable part, is not an indication of quality guarantee period, but it means the ideal time of filter replacement. Accordingly, the estimated time of filter replacement may be shortened in case it is used in an area of poor water quality.

Model of Filter	Type	Usable period (months)
CNFN14	NEO-SENSE FILTER	4-6
CRMFN14-50	RO MEMBRANE FILTER	18-24
CIFN14-PLUS	PLUS INNO SENSE FILTER	12-16

ARSENIC FACTS

Arsenic (abbreviated As) is found naturally in some well water. Arsenic in water has no color, taste or odor. It must be measured by a lab test. Public water utilities must have their water tested for arsenic. You can get the results from your water utility. If you have your own well, you can have the water tested. Information about arsenic in water can be found on the Internet at the US Environmental Protection Agency website: www.epa.gov/safewater/arsenic.html

There are two forms of arsenic: pentavalent arsenic (also called As(V), As(+5), and arsenate) and trivalent arsenic (also called As(III), As(+3), and arsenite). In well water, arsenic may be pentavalent, trivalent, or a combination of both. Special sampling procedures are needed for a lab to determine what type and how much of each type of arsenic is in the water. Check with the labs in your area to see if they can provide this type of service.

Reverse osmosis (RO) water treatment systems do not remove trivalent arsenic from water very well. RO systems are very effective at removing pentavalent arsenic. A free chlorine residual will rapidly convert trivalent arsenic to pentavalent arsenic. Other water treatment chemicals such as ozone and potassium permanganate will also change trivalent arsenic to pentavalent arsenic. A combined chlorine residual (also called chloramine) may not convert all the trivalent arsenic. If you get your water from a public water utility, contact the utility to find out if free chlorine or combined chlorine is used in the water system.

The CHPI-620L system is designed to remove pentavalent arsenic. It will not convert trivalent arsenic to pentavalent arsenic. The system was tested in a lab. Under those conditions, the system reduced 0.050 mg/L pentavalent arsenic to 0.010 mg/L (ppm) (the USEPA standard for drinking water) or less. The performance of the system may be different at your installation. Have the treated water tested for arsenic to check if the system is working properly.

The RO component of the CHPI-620L system must be replaced every 24 months to ensure the system will continue to remove pentavalent arsenic. The component identification and locations where you can purchase the component are listed in the installation/operation manual.

* VOC Surrogate Claims

Chemical	Influent Challenge Concentration (mg/L unless specified)	Maximum Allowable Product Water Concentration (mg/L unless specified)	Percent Reduction (%)
alachlor	0.050	0.001	> 98
atrazine	0.100	0.003	> 97
benzene	0.081	0.001	> 99
carbofuran	0.190	0.001	> 99
carbon tetrachloride	0.078	0.0018	98
chlorobenzene	0.0775	0.001	> 99
chloropicrin	0.015	0.0002	99
2,4-D	0.110	0.0017	98
dibromochloropropane(DBCP)	0.052	0.00002	> 99
o-dichlorobenzene	0.080	0.001	> 99
p-dichlorobenzene	0.040	0.001	> 98
1,2-dichloroethane	0.088	0.0048	95 ⁵
1,1-dichloroethylene	0.083	0.001	> 99
cis-1,2-dichloroethylene	0.170	0.0005	> 99
trans-1,2-dichloroethylene	0.086	0.001	> 99
1,2-dichloropropane	0.080	0.001	> 99
cis-1,3-dichloropropylene	0.079	0.001	> 99
dinoseb	0.170	0.0002	99
endrin	0.053	0.00059	99
ethylbenzene	0.088	0.001	> 99
ethylene dibromide (EDB)	0.044	0.00002	> 99
haloacetonitriles (HAN)			
bromochloroacetonitrile	0.022	0.0005	98
dibromoacetonitrile	0.024	0.0006	98
dichloroacetonitrile	0.0096	0.0002	98
trichloroacetonitrile	0.015	0.0003	98
haloketones (HK):			
1,1-dichloro-2-propanone	0.0072	0.0001	99
1,1,1-trichloro-2-propanone	0.0082	0.0003	96
heptachlor (H-34,Heptox)	0.08	0.0004	> 99
heptachlor epoxide	0.0107*	0.0002	98
hexachlorobutadiene	0.044	0.001	> 98
hexachlorocyclopentadiene	0.060	0.000002	> 99
lindane	0.055	0.00001	> 99
methoxychlor	0.050	0.0001	> 99
pentachlorophenol	0.096	0.001	> 99
simazine	0.120	0.004	> 97
styrene	0.150	0.0005	> 99
1,1,2,2-tetrachloroethane	0.081	0.001	> 99
tetrachloroethylene	0.081	0.001	> 99
toluene	0.078	0.001	> 99
2,4,5-TP (silvex)	0.270	0.0016	99
tribromoacetic acid	0.042	0.001	> 98
1,2,4-trichlorobenzene	0.160	0.0005	> 99
1,1,1-trichloroethane	0.084	0.0046	95
1,1,2-trichloroethane	0.150	0.0005	> 99
trichloroethylene	0.180	0.0010	> 99
trihalomethanes (includes):			
chloroform (surrogate chemical)			
bromoform			
bromodichloromethane	0.300	0.015	95
chlorodibromomethane			
xylenes (total)	0.070	0.001	> 99

MEMO

MEMO

////////////////////////////////////

////////////////////////////////////

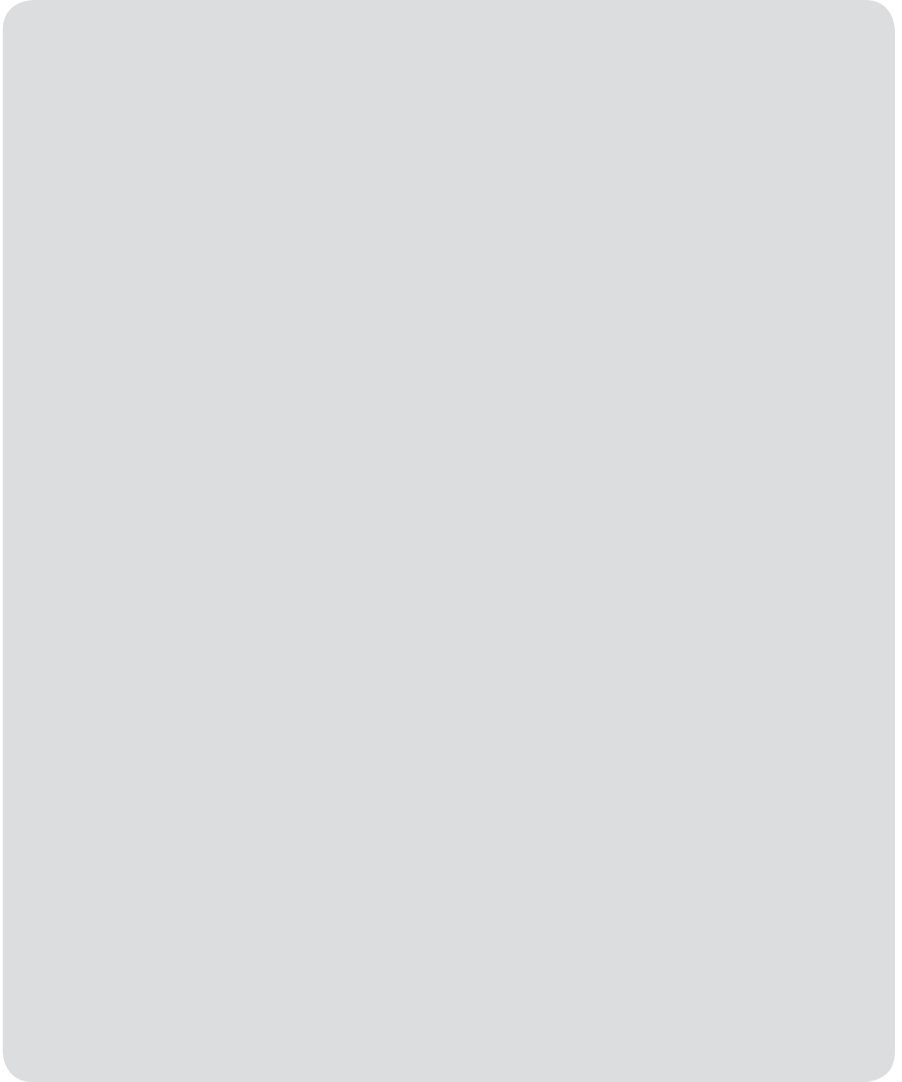
////////////////////////////////////

////////////////////////////////////

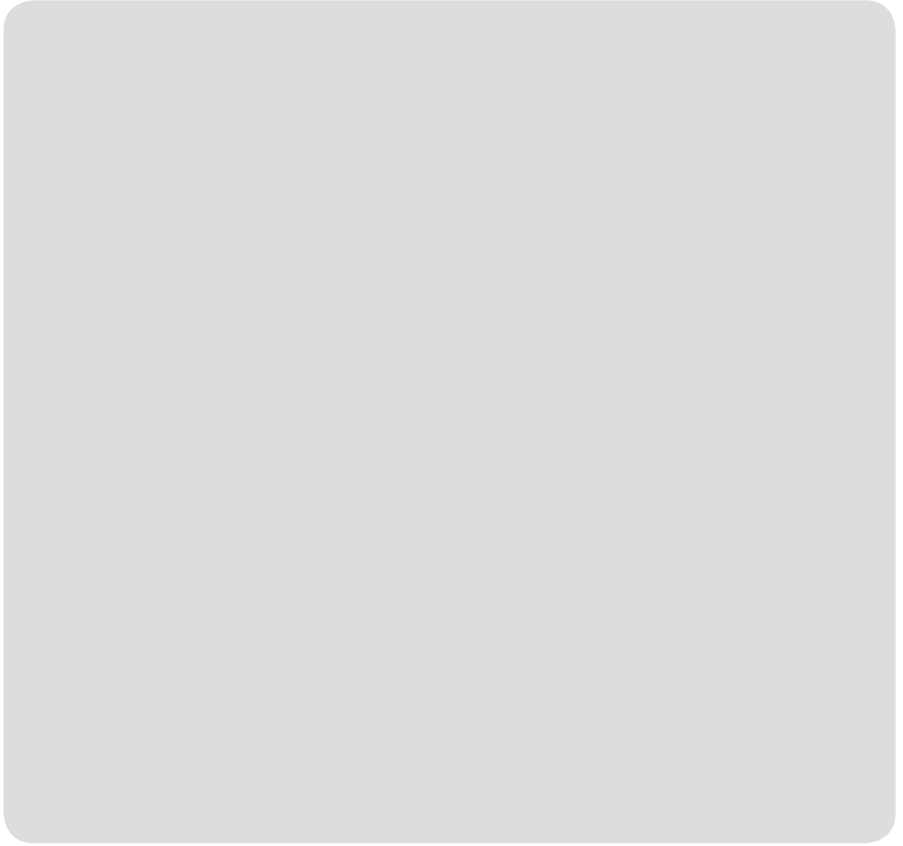
////////////////////////////////////

////////////////////////////////////

////////////////////////////////////



////////////////////////////////////



////////////////////////////////////

////////////////////////////////////

////////////////////////////////////

////////////////////////////////////

////////////////////////////////////

////////////////////////////////////

////////////////////////////////////

////////////////////////////////////

////////////////////////////////////

////////////////////////////////////

////////////////////////////////////

////////////////////////////////////

////////////////////////////////////

////////////////////////////////////

////////////////////////////////////

////////////////////////////////////

////////////////////////////////////

////////////////////////////////////

////////////////////////////////////

MÉMO

////////////////////////////////////

////////////////////////////////////

////////////////////////////////////

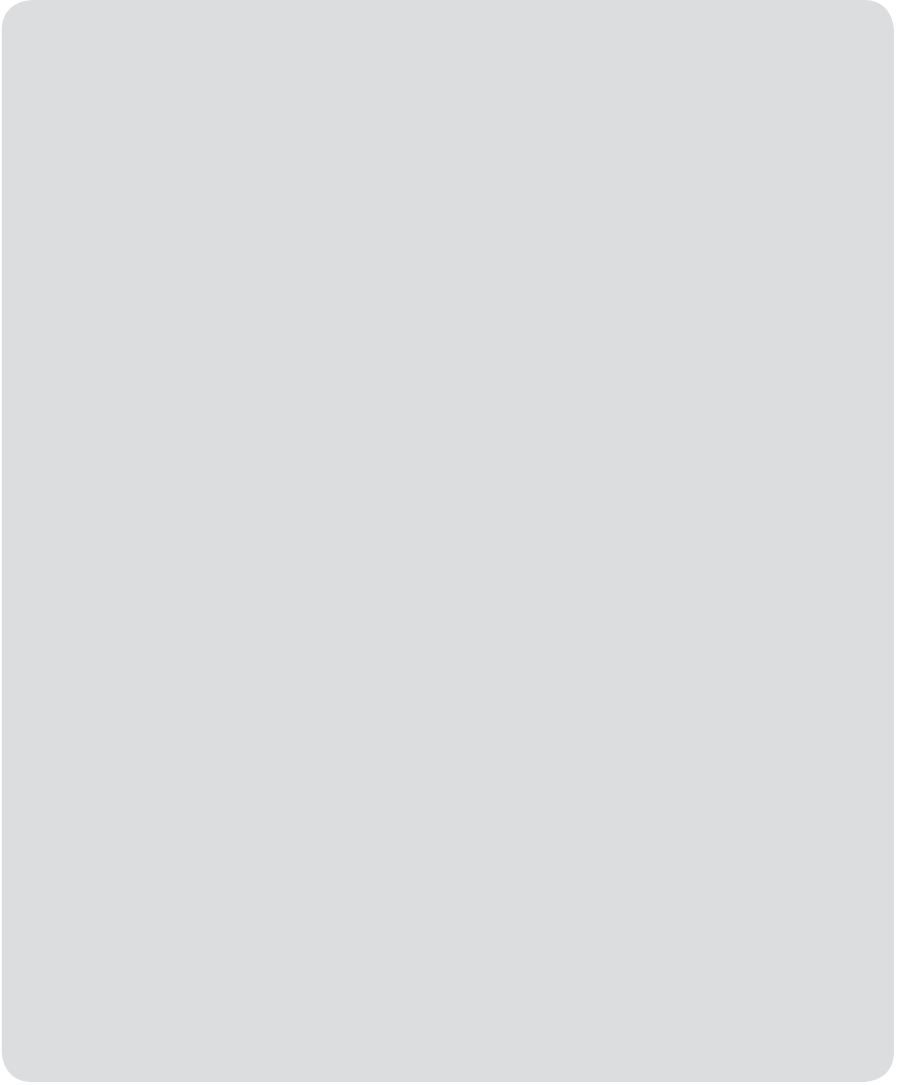
////////////////////////////////////

////////////////////////////////////

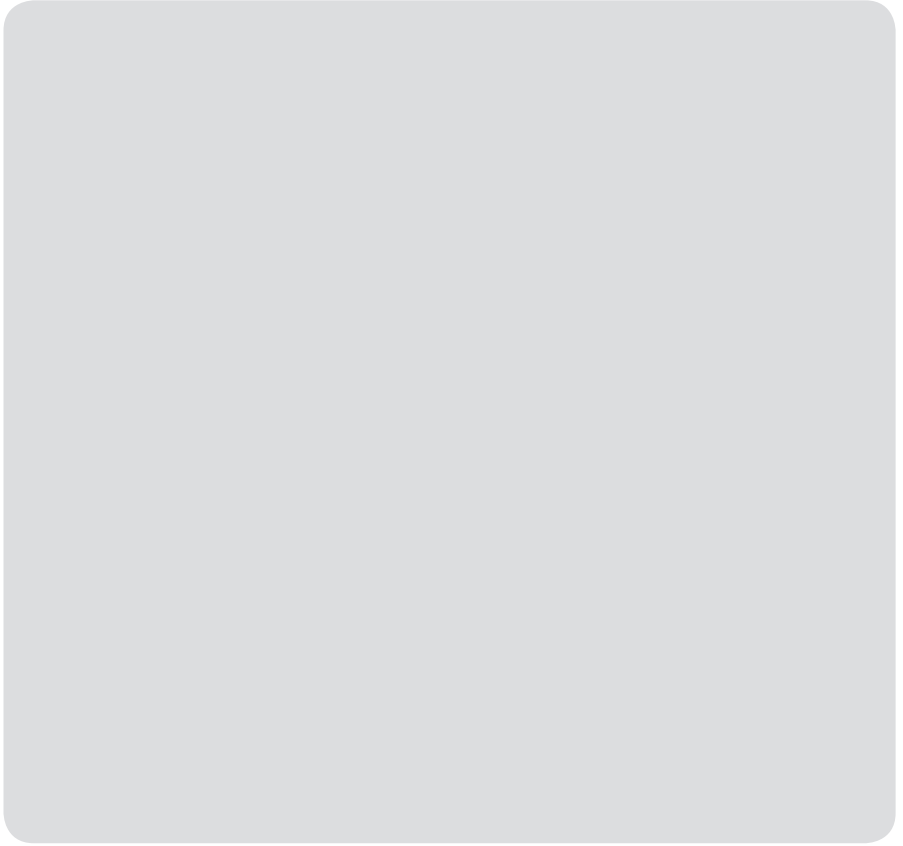
////////////////////////////////////

////////////////////////////////////

////////////////////////////////////



////////////////////////////////////



////////////////////////////////////

////////////////////////////////////

////////////////////////////////////

////////////////////////////////////

////////////////////////////////////

////////////////////////////////////

////////////////////////////////////

////////////////////////////////////

////////////////////////////////////

////////////////////////////////////

////////////////////////////////////

////////////////////////////////////

////////////////////////////////////

////////////////////////////////////

////////////////////////////////////

////////////////////////////////////

////////////////////////////////////

////////////////////////////////////

////////////////////////////////////

MEMO

////////////////////////////////////

////////////////////////////////////

////////////////////////////////////

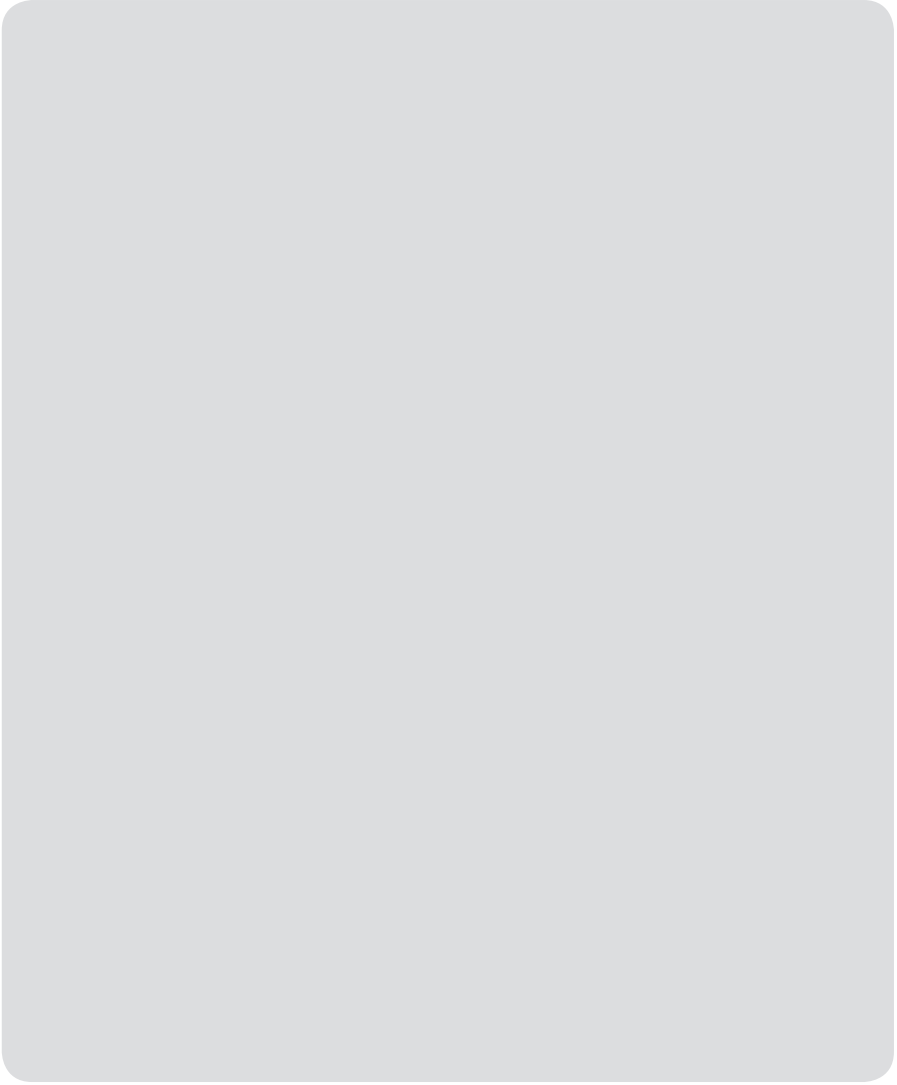
////////////////////////////////////

////////////////////////////////////

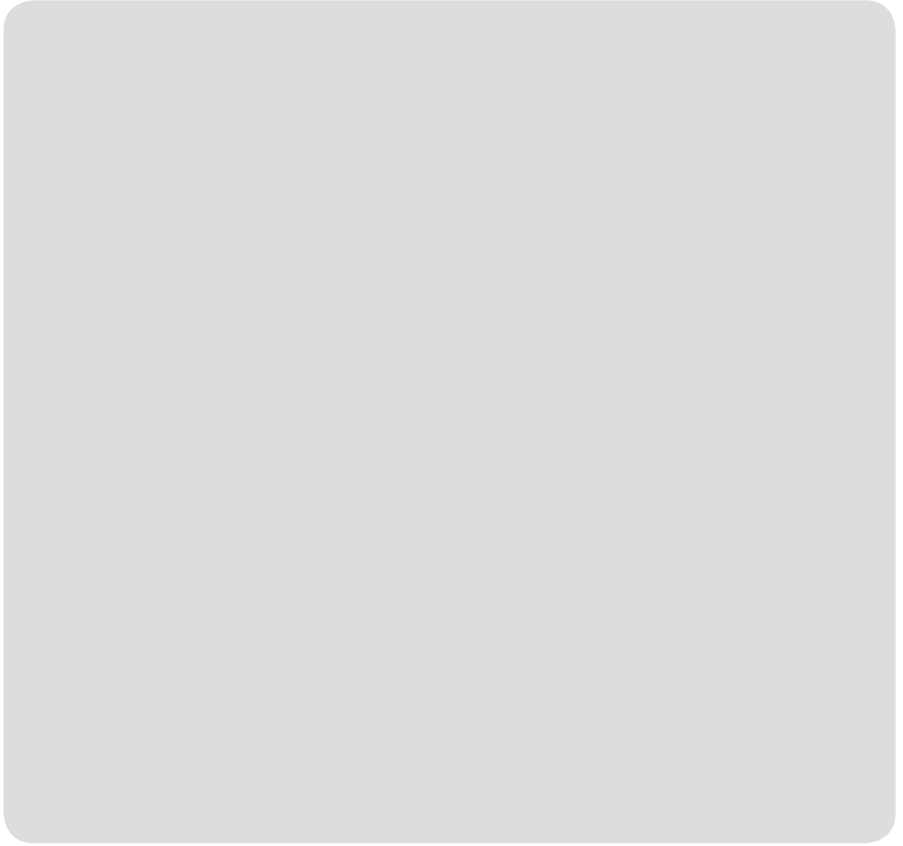
////////////////////////////////////

////////////////////////////////////

////////////////////////////////////



////////////////////////////////////



////////////////////////////////////

////////////////////////////////////

////////////////////////////////////

////////////////////////////////////

////////////////////////////////////

////////////////////////////////////

////////////////////////////////////

////////////////////////////////////

////////////////////////////////////

////////////////////////////////////

////////////////////////////////////

////////////////////////////////////

////////////////////////////////////

////////////////////////////////////

////////////////////////////////////

////////////////////////////////////

////////////////////////////////////

////////////////////////////////////

////////////////////////////////////

备忘录

////////////////////////////////////

////////////////////////////////////

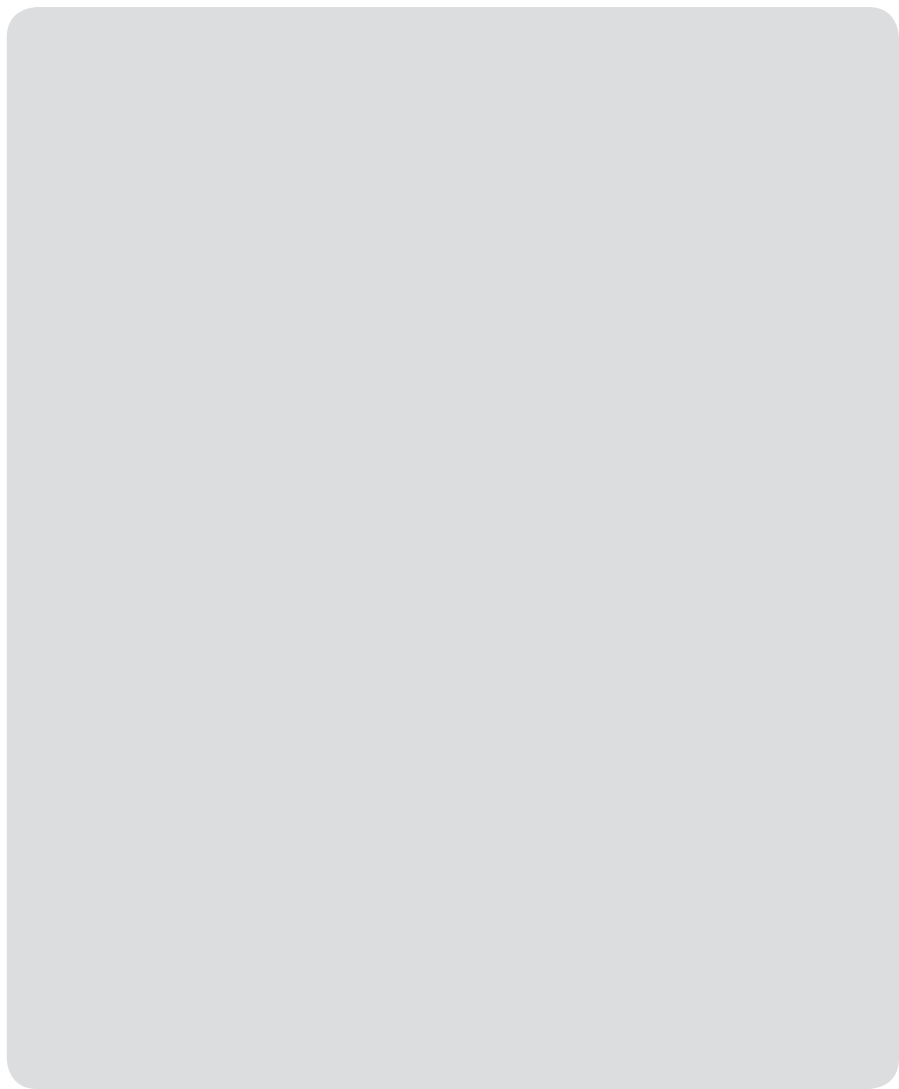
////////////////////////////////////

////////////////////////////////////

////////////////////////////////////

////////////////////////////////////

////////////////////////////////////



////////////////////////////////////



////////////////////////////////////

////////////////////////////////////

////////////////////////////////////

////////////////////////////////////

////////////////////////////////////

////////////////////////////////////

////////////////////////////////////

////////////////////////////////////

////////////////////////////////////

////////////////////////////////////

////////////////////////////////////

////////////////////////////////////

////////////////////////////////////

////////////////////////////////////

////////////////////////////////////

////////////////////////////////////

////////////////////////////////////

////////////////////////////////////

////////////////////////////////////

MEMO

WARRANTY CARD OR WARRANTY LETTER
ONE YEAR LIMITED WARRANTY
WATER Filtration Device CHPI-620L (“PRODUCT”)

Model:

Serial Number:

Customer Name:

(“OWNER”)

Date of Purchase:

What This Warranty Covers:

Commencing with the date of purchase of the Product and continuing for a period of one year, if manufacturing defects in the Product cause the Product to not operate properly for its intended use, then subject to the exclusions, conditions, and limitations contained herein, COWAY at its sole option will repair or replace the Product.

Decisions as to the extent of repair or replacement required will be made solely by COWAY.

The remedy under this Warranty is available only for that portion of the Product exhibiting defects at the time of the warranty claim. The replacement Product as well as any remaining original Product will be warranted only for the original one year warranty period. This limited warranty applies only to Product used for an application specified by COWAY for the Product and applied in strict accordance with COWAY published specifications in effect at the time of application. IF PRODUCT IS USED FOR OTHER THAN ITS INTENDED PURPOSE, IT IS SOLD AS IS AND WITHOUT ANY EXPRESS OR IMPLIED WARRANTIES, INCLUDING OF MERCHANTABILITY OR FITNESS FOR A PARTICULAR PURPOSE.

What This Warranty Does Not Cover:

This Warranty warrants that the Product will be free from manufacturing defects which affect the ability of the Product to operate for its intended use; it is not a warranty that the Product will never require repairs or to undertake responsibilities, liabilities or obligations other than those specifically identified in the preceding section. COWAY is not responsible or liable for personal injury or property damage of any kind, even if arising from a breach of this Warranty.

Limitations and Exclusions:

TO THE EXTENT PERMITTED BY APPLICABLE LAW, COWAY DISCLAIMS ANY OTHER WARRANTY EXPRESS OR IMPLIED, THAN THAT PROVIDED FOR HEREIN. THIS WARRANTY IS IN LIEU OF AND EXCLUDES ALL OTHER WARRANTIES, GUARANTEES, CONDITIONS AND REPRESENTATIONS, EXPRESS OR IMPLIED, ORAL OR WRITTEN, STATUTORY OR OTHERWISE, INCLUDING BUT NOT LIMITED TO ANY IMPLIED CONDITIONS OR WARRANTIES AS TO THE MERCHANTABILITY OR FITNESS FOR A PARTICULAR PURPOSE OF THE COWAY PRODUCT. SOME STATES DO NOT ALLOW LIMITATIONS ON HOW LONG AN IMPLIED WARRANTY LASTS, SO THE ABOVE LIMITATION MAY NOT APPLY TO YOU. COWAY DOES NOT AUTHORIZE ANY PERSON INCLUDING ITS REPRESENTATIVES, TO MAKE ANY REPRESENTATION OR TO OFFER ANY WARRANTY, CONDITION OR GUARANTY IN RESPECT OF THE PRODUCT OTHER THAN THIS WARRANTY. THIS LIMITED WARRANTY SHALL BE THE OWNER'S SOLE AND EXCLUSIVE REMEDY AGAINST COWAY AND COWAY SHALL NOT BE LIABLE FOR ANY CONSEQUENTIAL, EXEMPLARY, SPECIAL, INCIDENTAL OR OTHER DAMAGES INCLUDING, BUT NOT LIMITED TO, LOSS OF PROFITS, AND LOSS OF USE. INCIDENTAL, CONSEQUENTIAL AND EXEMPLARY DAMAGES SHALL NOT BE RECOVERABLE EVEN IF THE REMEDIES OR THE ACTIONS PROVIDED FOR IN THIS WARRANTY FAIL OF THEIR ESSENTIAL PURPOSE. SOME STATES DO NOT ALLOW THE EXCLUSION OR LIMITATION OF INCIDENTAL OR CONSEQUENTIAL DAMAGES, SO THE ABOVE LIMITATION OR EXCLUSION MAY NOT APPLY TO YOU. COWAY SHALL NOT BE LIABLE FOR ANY DAMAGES WHICH ARE BASED UPON NEGLIGENCE, BREACH OF WARRANTY, STRICT LIABILITY OR ANY OTHER LEGAL THEORY OF LIABILITY OTHER THAN THE EXCLUSIVE LIABILITY SET FORTH IN THIS WARRANTY.

Limitations on Implied Warranties:

Any implied warranty of merchantability or fitness for a particular purpose or use, shall be limited to the duration of the foregoing express written warranty.

Conditions of Warranty:

COWAY's continuing liability under this Warranty is conditioned upon the following:

- a) The defect or damage is not caused by or is the result of: abnormal use or conditions; improper storage, unauthorized modifications or repair; misuse, neglect, accident, alteration, improper installation or other acts that are not the fault of Coway or the manufacturer of the product or that are not covered by the manufacturer's warranty;
- b) The Product has not been altered, modified or repaired without prior written approval of COWAY;
- c) The OWNER has notified COWAY in writing of any failure of the Product covered by this Warranty within thirty (30) days following such failure;
- d) There has been no misuse, abuse or negligence with respect to the Product on the part of the OWNER.

COWAY

Add : Coway co., Ltd.
136-23, Yugumagoksa-ro, Yugu-eup, Gongju-si,
Chungcheongnam-do, Korea
Tel. : 82-1588-5100

THAILAND

Add : COWAY(THAILAND) CO., LTD.
75/104-106 Ocean Tower 2 38Fl, Soi
Sukhumvit 19(Wattana), Sukhumvit Road,
Klongtoey Nua, Wattana, Bangkok 10110
HQ : 66-2-261-2610
Call center : 66-2-261-0209

Waiver:

COWAY's failure at any time to enforce or rely upon any of the terms or conditions stated herein shall not be construed to be a waiver of its rights hereunder.

Obtaining Warranty Service and OWNER'S Duties:

If the Product fails to operate for its intended purpose, then notify COWAY or its Representative Agency, within 48 hours or within the next business day after discovery of any defect in the Product. The OWNER must give written notice to COWAY no later than thirty (30) days after a defect is discovered or should by reasonable diligence have been discovered. Claims under this Warranty will require proof of purchase by the OWNER.

USA

Add : Coway USA Inc.
4221 Wilshire Blvd. #210 Los Angeles, CA90010
Call center. : (213) 386-3033
Fax. : (213) 386-3032

MALAYSIA

Add: COWAY (M) SDN BHD
SUITE 6-3 & 6-4 LEVEL 6, WISMA UOAI
NO.21 JALAN PINANG 50450 KUALA LUMPUR
Call center : 1-800-888-111

coway

www.coway.com

